



Real time data wherever you happen to be

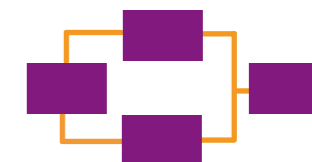
Data acquisition in a functional and simple way

Your high performance tool

You always know everything you need to know anytime and anywhere.



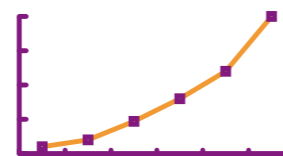
High performance data acquisition and reporting software for process data monitoring.



Plantvalue fulfils the design requirements of robust application.



The ITECH515 solution is simply envisioned to be an extension of the overall plant process control system.



The result of our commitment to product excellence is that Plantvalue has improved our customers' process performance.

Plantvalue has an open, modular and scalable architecture that makes it easily flexible and quickly configurable.



A simple vision

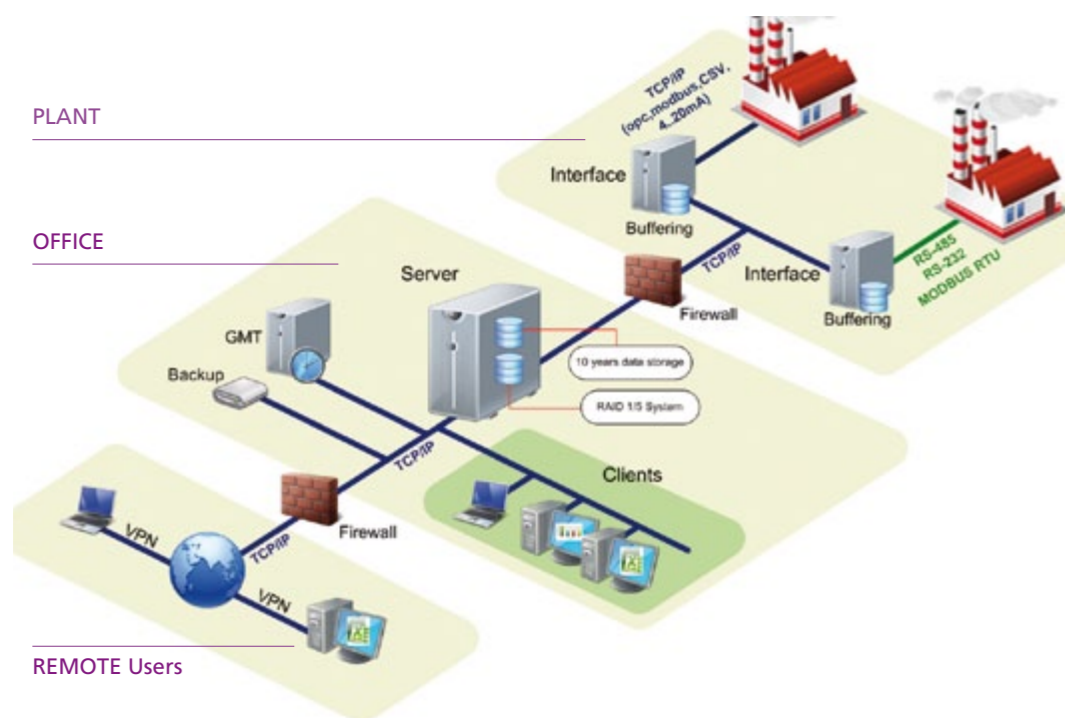
"PlantValue has allowed us the modernization of information management and services control in a realtime mode in easy and agile way."

D. Montserrat,
Technical Manager, AITASA

The main target: To know, share, simplify and optimise through a flexible system

Open, instant access to plant information

Plantvalue offers open, instant access to information. Access to integrated data with a simple and real-time vision allows managers and operators to supervise and manage their processes. This helps in decision-making and improves the company's profitability and efficiency.



Easily connected & standardised

The Plantvalue interface acquires data from any electronic system (scada, DCS, analyzers, hardwired signals,...) using the most standard protocols on the market (OPC, Modbus, IP,...)

A system that improves your production process

The better the information management tool you have, the bigger the improvement you attain. Plantvalue allows to get real-time or historical data, check alarms, analyse trends ... anytime and anywhere.



Securely opened: The web & Microsoft tools

Plantvalue enables companies to consult information from different sites or production plants in a completely secure manner. You can update plant production data, check systems, analyse trends ... wherever you are.

"The program facilitates the task and saves time, while satisfying all legal and technological demands."

E. Espallargas,
Department Manager, REPSOL

Data management through standard applications



Plantvalue uses well-known tools to manage data. Create tables, graphs, reports ... no need to waste time learning new applications.

Graph management to help make the right decisions

- Tooltip for each point.
- Resizable objects.
- Selection of period to be displayed.
- Interactive (Zoom).
- Printable.
- Filters for enhanced information searches.
- Multi-platform (Internet, iPad...).
- 16 pens at a time.
- Real & historical data.



One graphic user interface: one vision



A user-friendly interface makes things easy – your plant at a glance.

Alarm management to help make quick decisions

A simple interface to create alarms, giving a clear overview of the situation. Alarms and events can be sent to any user / group of users via SMS or e-mail.

- Alarms are objects programmed using the Administrator profile.
- They enable the user to control any situation by displaying the percentage of progress of an event.
- We can program them to send SMSs or emails to groups and/or users.
- Alarms are treated as tags, so graphs and event logs can be generated.
- Alarms are displayed as percentage values from 0-100%, where 100% indicates the activation of the alarm. Earlier statuses allow us to take preventive action.
- Alarm Treemap allows alarms to be organised by tag, zone or plant in order to minimise alarm repetition and permanent alarms, and be able to comply with standards such as ANSI/ISA 18.2-2009 or EEMUA 191.



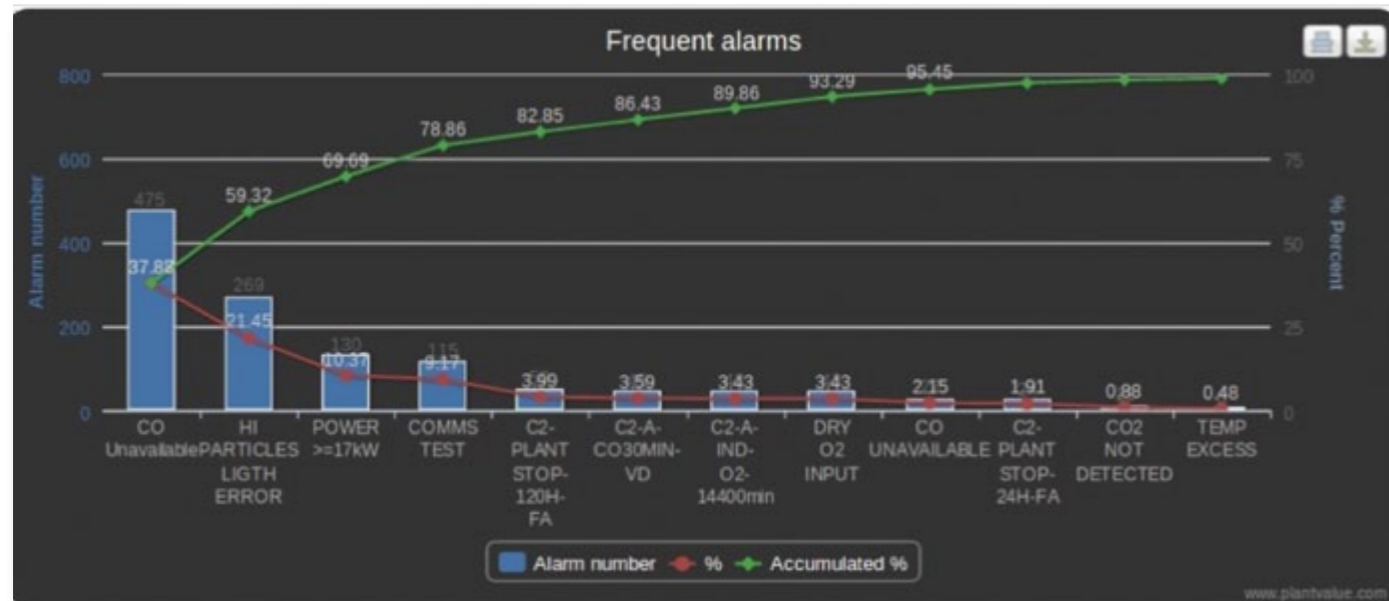
"PlantValue gives my clients the added value they need because they receive all the information about their plant quickly and efficiently."

Mr. Jiang,
General Manager, Wuhan HENRY
Automation Engineering Co.

A leading solution for comprehensive alarm performance management

- Dynamic alarm management.
- Detailed analysis of alarms in real time.
- Suppression of alarm floods.
- State-based alarms.
- Alarm configuration auditing and enforcement.
- Shelved alarms.
- Integration of multiple system alarms into a common interface.

Powerful graphic tools to analyse and define the right alarm strategy



Key Performance indicator

Alarm management as per EEMUA and ANSI/ISA 18.2-2009 have led us to define some KPIs (Key Performance Indicators) to measure some very clear targets.

KPI	Target
Manageable Steady State	1 per 10 minutes
Flood State	10 in 10 minutes
Average Process Alarm Rate	5 per hour (120 per day)
% of Time Alarms Exceeding Target Average	0%
Peak Alarm Hourly Rate	15 per hour
Peak Alarm Minute Rate	2 per minute
Alarm Activity Priority Distribution	****5% ****15% ****80%
Alarms within 10 minutes of a Major Upset	10 or less
Chattering Alarms	0
Stale alarms (more than 1 day old).	0
Average Alarms / Controller	4
Unauthorized Changes to Alarm Settings	0

- Basic recommendations for alarm management.
- Measure alarm rates, and other alarm key performance indicators, and compare them with recommendations from EEMUA 191, or with values from benchmark plants.
- Identify low-hanging fruits.
- Eliminate nuisance alarms. This might include tuning control loops, replacing faulty sensors and changing the status of some indicators from alarms to events.
- Measure alarm performance indicators regularly to ensure they remain in the desired target area.

Powerful tools to help make the right decisions

- Alarms are integrated in the process graphs together with the associated signal value, which enables an analysis to be performed of the exact moment they happen.
- Manual data input for signals that are not in the plant DCS (i.e. laboratory signals).
- Automatic multilanguage.
- Different user privileges.



"VisualCEMS is a powerful, flexible, reliable and user-configurable software tool. It gives a complete picture of environmental emissions and helps in regulation compliance. It is a milestone in environmental software development."

F. Brunet,
Department Manager, DOW

VisualCems: the leading solution for continuous emission monitoring system applications

- Environmental Module
- Data reading (spot and averages) every minute allows for change in engineering units, calibration line (QAL 2), standardisation, confidence interval, ELV analysis...
- Selection of order and type of calculation
- Control bit assignment
- Calculation of averages with ELVs, alarms...
- Totalisers for critical situations such as unavailability, malfunction, invalid range, etc.

Based on the Plantvalue software engine, VisualCEMS is a multiplatform management tool, fully adaptable and simply functional, which allows users to acquire, manage and analyse real-time emission monitoring data.

VisualCEMS also provides powerful reporting tools with MS Excel add-ons, Internet, graphic and trending capabilities.

visualCEMS
Continuous Emission Monitoring Data Management System

Support & services

Assisted service program – the added value

Plantvalue includes the Assisted Service Program (ASP), which offers the client a powerful set of added values:

Upgrades: Technology is constantly evolving, which is why we need to have versions that are compatible with current operating systems.

Support: Telephone helpline or remote assistance during working hours, 24/365 service.

Plantvalue, state of the art development.
Powerful Tools

plantvalue⁺
Process Monitoring Data Management System

Software designed and developed by ITECH515

 **ITECH515**
solutions

Avinguda Josep Maria Cases de Muller, 74
43007 TARRAGONA (SPAIN) - Phone:+34 977 203 060
info@itech515.com - www.itech515.com

