

## REAL-TIME DATA, WHEREVER YOU ARE



- MS Excel add-in for data management
- It supports the most common communication protocols
- Web platform
- Drag & Drop technology
- Multiplatform
- Scalable solution

**MEASURES**

- pH
- Conductivity
- T.O.C
- Particles
- DBO<sub>5</sub>
- Nitrate
- Nitric
- Nitrogen
- Phosphor
- DQO

**LEGISLATION**

- European Legislation
- National Legislation
- Autonomous Legislation



**SUCCESS CASE: PIPELINE**

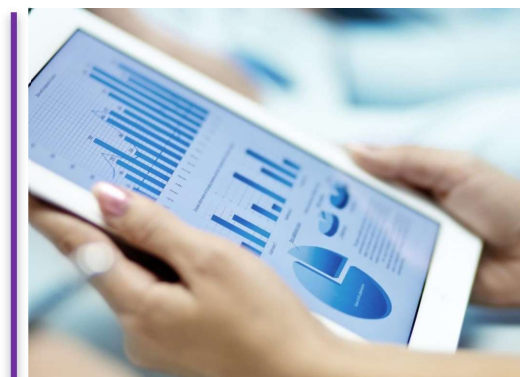
In order to gather, view and process data from an analyser house for the pipeline set located in Tarragona (Spain), the PlantValue solution is installed for generating screens and control alarms for the equipment installed. Furthermore, files are sent in 15-minute intervals to the Catalan Water Board (Agencia Catalana de Agua, ACA) in the format required by the Council.

This project is jointly developed with Aguas Industriales de Tarragona (AITASA).



**DATA MANAGEMENT WITH STANDARD TOOLS**

- Data management is carried out using the MS Excel® ProData and ProManager add-ins.
- Current data visualisation, history, initial date, number of exceedances, performance time... and many other functions.



**POWERFUL TOOLS TO MAKE THE RIGHT DECISIONS**

**ITECH 515, SL**  
 Polígono Industrial Riu Clar – C/Estany, Parc 5.1.5 Nave nº 18  
 43006 Tarragona SPAIN  
 Tel (+34) 877 990 139 Fax (+34) 977 203 060  
[marketing@itech515.com](mailto:marketing@itech515.com) <http://www.plantvalue.com>

**ITECH 515 GmbH ZÜRICH (Switzerland)**  
 Technoparkstrasse 1  
 CH-8005 ZÜRICH (Switzerland)  
 Tel.: +41 79 910 40 31  
[marketing@itech515.com](mailto:marketing@itech515.com)

